

# HMC Single Duct Cabin Unit

for Crew Cabins,  
Manual Model



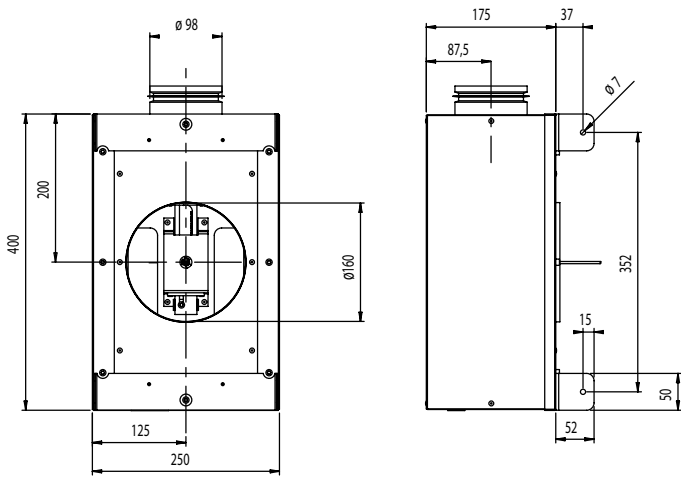
V1M12Y2007/Halton Marine reserves the right to alter products without notice.

The Halton HMC is a manually operated cabin unit for single duct applications. Airflow is controlled via an adjusting knob installed through the diffuser. The control mechanism has mechanical limits for minimum and maximum airflows. Airflow limits can be easily set during commissioning. HMC is recommended to be used in conjunction with Halton's TCL diffuser (B15) that is specifically designed for HMC cabin unit. TBM (rectangular) or TDM (circular) diffusers with adjustment knob are also available to be used with HMC. HMC cabin unit is designed for ductwork pressure from 50Pa up to 700Pa. Operation range for HMC is 0 m<sup>3</sup>/h - 180 m<sup>3</sup>/h.

- Airflow adjustment with diffuser knob, painted with the diffuser colour
- Mechanical max/min airflow limits for easy commissioning
- Applicable to B-0 and B-15 installations

PART	MATERIAL	PART	MATERIAL
Casing	Hot galvanized steel	TCL diffuser	Epoxy-painted steel, white RAL9010,
Spigots	Hot galvanized steel and EPDM rubber		special colours available on request
Insulation	Mineral wool, s = 25 mm, MED approved		

## GENERAL HMC drawings

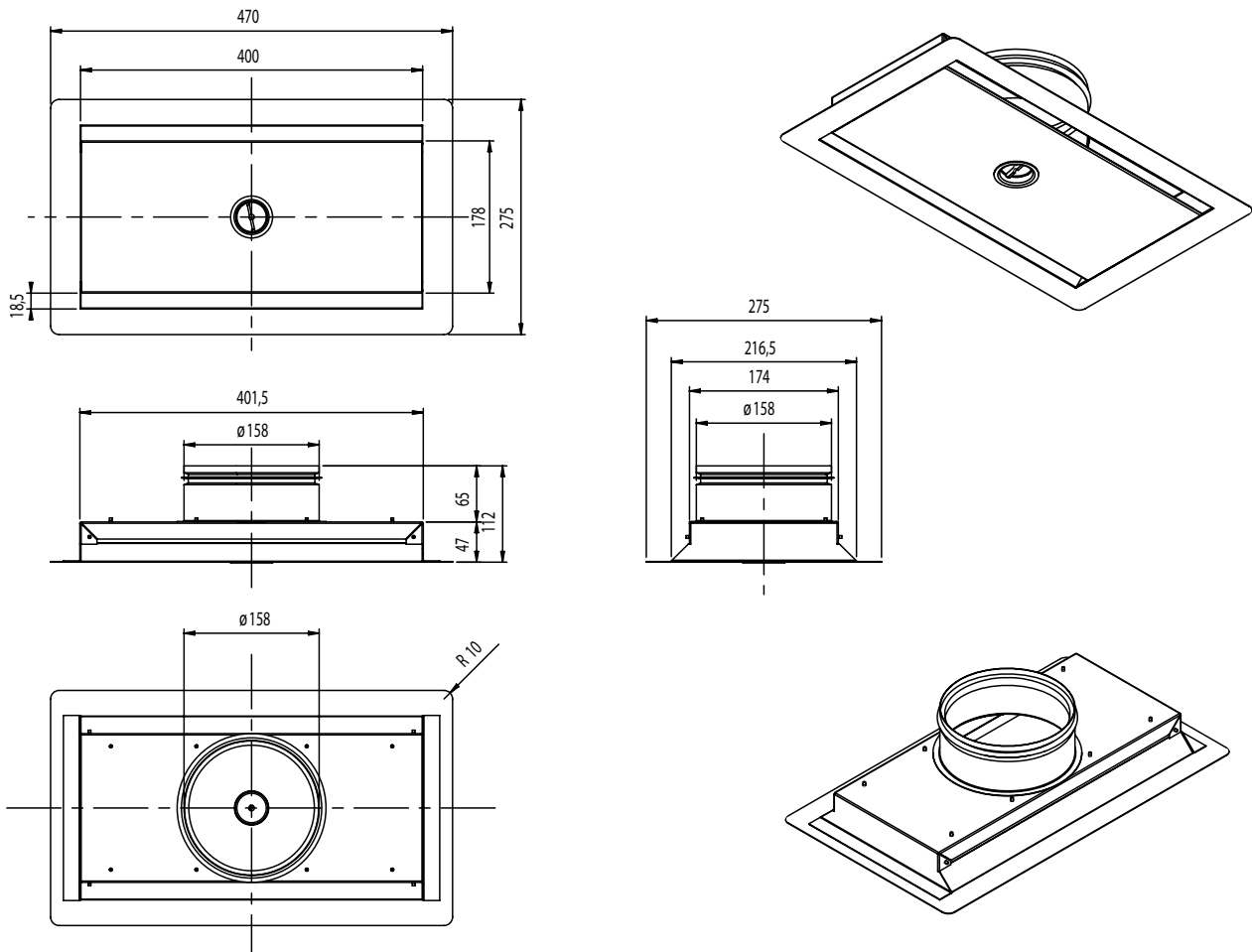


## DIMENSIONS TABLE

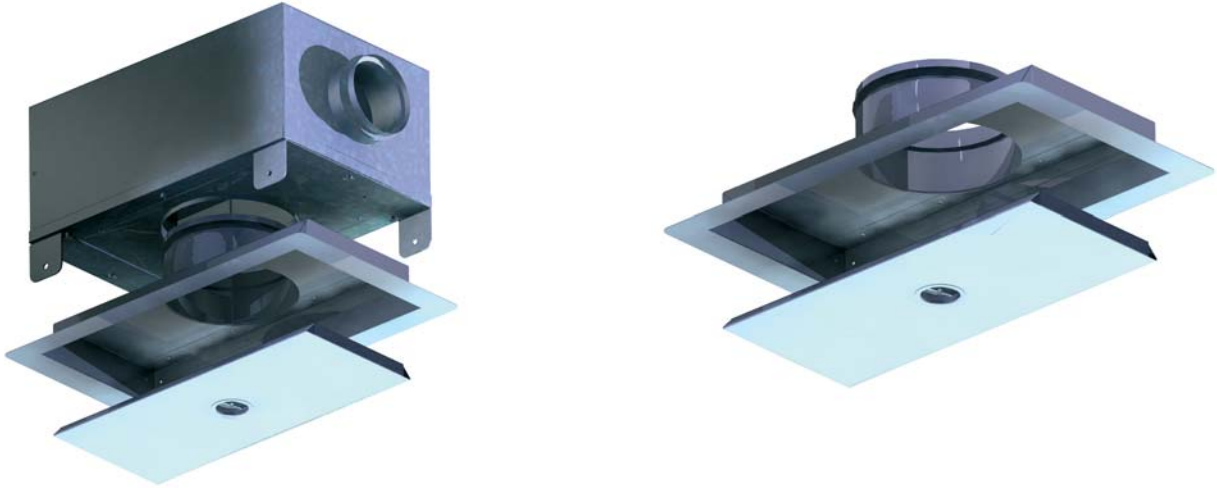
HMC Dimensions					
	B	L	H	ØD1 male/ female	ØD2 male/ female
HMC-100	250	400	175	159/161	99

Note:  
male connection: outer dimension  
female connection: inner dimensions

## GENERAL TCL drawings

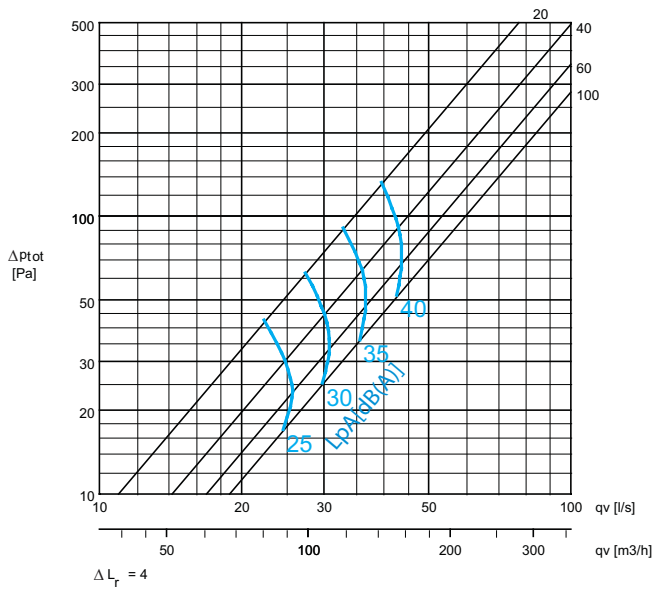


## MAIN PARTS

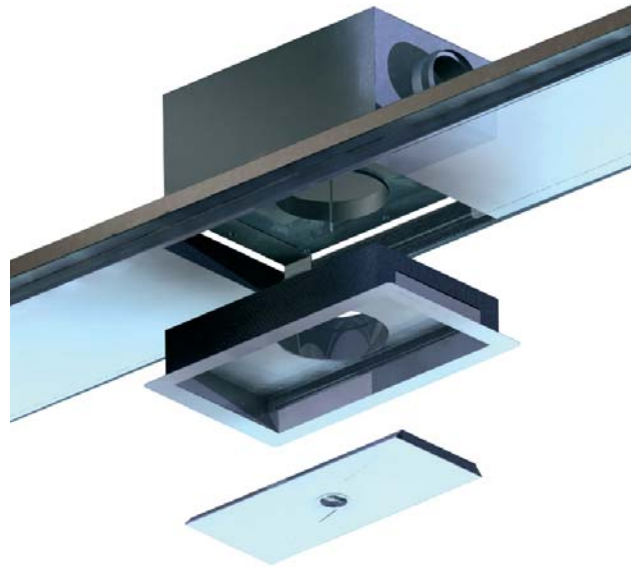
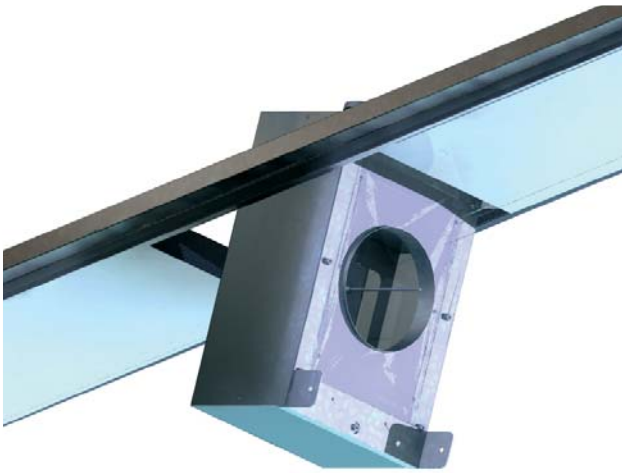


### Performance data for HMC

Pressure drop and sound levels (cabin sound absorption 4 dB(A))



INSTALLATION EXAMPLE



V1M12Y2007/Halton Marine reserves the right to alter products without notice.